



MOUNTAIN  
RESERVE  
— COLLECTION —



LUXURY KITCHEN & BAR SYSTEMS

Est. 2026



# MOUNTAIN RESERVE

— COLLECTION —

Est. 2026



## Crafted Experience

Moments become memorable when the details are intentional. From the first pour to the final toast, Mountain Reserve creates the backdrop for gatherings that feel effortless, refined, and worth savoring.



## Atmosphere, Perfected

Lighting softens. Glasses clink. Time slows. Mountain Reserve transforms functional spaces into a destination. Design, performance, and mood align seamlessly.

---

### A Destination at Home

When technology, hospitality, and craftsmanship align, the space becomes more than functional, it becomes unforgettable.



## Luxury Kitchen and Bar Systems

The best conversations happen when everything works beautifully in the background. Mountain Reserve systems are engineered to support entertaining with precision, elegance, and quiet confidence.



---

### Designed to Delight

From sparkling refreshment to handcrafted cocktails, every pour should feel deliberate. Mountain Reserve enhances the experience behind the bar so every detail reflects intention and refinement.



---

### Entertaining Without Limits

Indoors or out, Mountain Reserve extends the experience beyond the expected. Designed for performance in every setting, each system supports effortless hosting wherever people gather.

# HydraOne™

## 5-in-1 Water System

HydraOne™ is the most advanced 5-in-1 water system designed for modern living. From a single faucet, you'll enjoy instant access to sparkling, chilled, filtered, hot, and tap water - all with a seamless interface and luxury finish options. Whether crafting cocktails at the bar or preparing dinner in the kitchen, HydraOne™ transforms hydration into an elevated, intuitive experience.



# The Way Water Should Be.



HydraOne™ Faucet

**Regular Tap Water:** Standard water flow for everyday use, easily accessed from the same sleek HydraOne™ faucet.

**Filtered Instant Hot Water (with Child Lock):** Delivers near-boiling, filtered water instantly - ideal for tea, coffee, and cooking, with a built-in safety lock for peace of mind.

**Filtered Ambient Water:** Fresh, clean water at room temperature, perfect for drinking or quick rinsing without waiting or waste.

**Filtered Chilled Water:** Crisp, cold refreshment on demand — filtered and cooled for the perfect sip, straight from the faucet.

**Filtered Sparkling Water:** Enjoy restaurant-quality sparkling water anytime. Infused with CO2 for effervescent refreshment at the touch of a button.

## CO2 Cylinder, Leak Detector, & Water Filter Included

MTCO2TANK-5 (5 Pound capacity CO2 Tank)

MT6LD (Leak Detector)

MT1250XL (Mountain Pure® Carbon Filtration System)

## 4 Year Warranty on Faucet & Water System

**UL Certified (HYDRAONE) | NSF Certified (MT1250XL)**

## Showroom Exclusive

Model # **HYDRAONE/\*\*\***



HydraOne™ Unit

## Dimensions:

### HydraOne™ Faucet

- 11-3/8" Height (Countertop to Top)
- 9-3/4" Height (Countertop to Spout)
- 9-5/8" Reach (Back of Faucet to Front)

### HydraOne™ Unit

- 15-1/2" Height x 9-3/4" Wide x 18" Deep

## Includes:

### 5 Pound Capacity CO2 Tank

Model # **MTCO2TANK-5**

### Safety Valve-Leak Detector

Model # **MT6LD**

### Mountain Pure® Carbon Filtration System

Model # **MT1250XL**



# Mountain CHILLED™

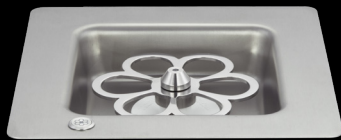
## Glass Chillers

The Mountain CHILLED™ is easy to use and beautiful to look at, two aspects that make the CHILLED a perfect addition to a home's bar or beverage center space for those who want to serve their family and guests with style and refinement.





## Chill Instantly. Serve Exceptionally.



### Drop-In Glass Chiller

This minimalist designed CHILLED model allows for the CHILLED to be recessed, dropped into the counter surface of the home's bar or beverage center space.

- Opening Size Required: 7-3/4" x 7-3/4"
- Plugs directly into 110v outlet
- Requires CO2 cylinder with siphon tube (sold separately)
- Made of 304 Stainless Steel
- Made in Italy
- **Showroom Exclusive**

Model # **CHILLED/\*\*\***



### Countertop Glass Chiller

This uniquely designed CHILLED model allows for portability and flexibility to complement any entertaining space: bar, kitchen, and even outdoors.

- 10.5" x 8" x 3" footprint
- Operates on rechargeable 12V battery; charger included
- Requires CO2 cylinder with siphon tube (sold separately)
- Made of 304 Stainless Steel
- Made in Italy
- **Showroom Exclusive**

Model # **CHILLEDCT/\*\*\***



### Tower Glass Chiller

This mobile CHILLED model rolls effortlessly to any entertaining space: tableside, bar, kitchen, or outdoors.

- 11-7/8" Square x 35-7/16" Tall
- 12 V Rechargeable Battery – 100/240V AC Plug
- 4 Dual Wheels with Anti Slip Rubber
- Locks for Rear Wheels
- Requires CO2 cylinder with siphon tube (sold separately)
- Made in Italy
- **Showroom Exclusive**

Model # **CHILLEDTWR/\*\*\***

## Additional CHILLED™ Products



### CHILLED-COVER

Optional Cover in Matching Finish



### MTCO2TANK-10SY

10 Pound Aluminum Cylinder  
Siphon Tube Included  
Handle Included  
20-3/4" Tall



### MTCO2TANK-20SY

20 Pound Aluminum Cylinder  
Siphon Tube Included  
Handle Included  
27-9/16" Tall



# Mountain EMBER™

## Digital Heating Tank

With heating power and digital precision, EMBER™ delivers near-boiling water on demand - every degree, perfectly controlled. Designed for both performance and refinement, EMBER™ pairs advanced technology with timeless convenience. The intuitive touch-screen interface provides precise temperature control and easy operation, making every interaction effortless.

- Touch Screen Digital Display
- Temperature Control 167° - 208° F
- 1500 Watt Heating Element
- 110-120v
- 10-3/4" Tall x 8" Wide x 8" Deep
- 3 Year Warranty (Extended 4 Year Warranty when paired with any Mountain Pure® Filter)
- UL Certified
- [Showroom Exclusive](#)

Model # **EMBER**





# PHANTOM1™

## 1 HP Quiet Disposer

Phantom1™ is the pinnacle of food waste disposers engineered for those who demand more from their homes. Featuring a brushless DC permanent magnet motor, Phantom1™ delivers the most powerful and refined grinding experience – with whisper-quiet operation that disappears into the background of luxury living. Unlike standard disposers, Phantom1™ is available in a single, uncompromising 1-horsepower disposer model.

- Increases RPM when Resistance is Detected (1600/3400 RPM)
- 1 HP
- 110v, 1.8 Amps
- 11-3/8" Tall x 7-13-16" Wide
- Safe for Properly Sized Septic Tanks
- ETL Approved
- **Showroom Exclusive**

Model # **PHANTOM1**



# Bring it All Together

## Crafted to Complete

The most memorable spaces are defined not only by signature pieces, but by the details that complete them. From refined activation controls to precision-crafted sink accessories, these complementary elements ensure your kitchen or bar entertainment area feels intentional, seamless, and fully realized. When every component works together, the result is more than performance, it's presence.





## The Art is in the Details.

Complete your kitchen or bar entertainment space with precision-crafted accessories.



### Round Deluxe Air Switch

For use with all continuous feed waste disposers with attached power cords. Creates a streamlined, professional installation while keeping power connections secure.

- Round Flush style button with 1-3/8" mounting hole
- Freedom to mount box anywhere
- Fits up to 2" thick deck
- Solid brass construction
- No tools required for installation
- Air actuated
- ETL Approved

Model # **MT957/\*\*\***



### Stopper and Strainer

The MT200EV is a complete strainer with collar that is compatible with continuous feed models only. Precision-crafted for a secure fit and clean finish, this stopper/strainer unit enhances both performance and appearance at the sink.

- Works with PHANTOM1 1 HP Quiet Disposer
- 1-5/8" tall
- Fits sinks up to 5/8" thick
- 3-1/8" diameter basket strainer

Model # **MT200EV/\*\*\***



### Countertop Glass Rinser

The Glass Rinser brings modern convenience right to your sink. Using a high-pressure water spray, it quickly and thoroughly rinses glassware, bottles, and cups.

- Connects to either hot or cold supply line
- All hoses and fittings are included (tee adaptor & 2-1/2" braided hose)
- Made from stainless steel
- Requires 1-1/4" mounting hole
- Includes Base and Cover

Model # **MT250/\*\*\***

## Where Luxury Meets Functionality

Born from nearly three decades of precision engineering, Mountain Reserve represents the pinnacle of performance, design, and detail. Every piece in this collection is crafted for those who appreciate the art of entertaining. Created for the spaces where people gather, the Mountain Reserve transforms utility into experience. Each system delivers intuitive control, enduring craftsmanship, and a visual signature that complements any interior design. From precision water systems and glass chillers to advanced heating and rinsing solutions, each product delivers user-friendly operation and instant performance — designed to look as exceptional as it performs.



**MOUNTAIN  
RESERVE**  
— COLLECTION —

[mountainreservecollection.com](http://mountainreservecollection.com)

---

### Mailing Address

Mountain Plumbing Products  
PO Box 1948  
Coppell, TX 75019

### Phone

(972) 456-3273

### Fax

(972) 456-2719

### Physical Address

2611 Regent Boulevard  
Suite 100  
DFW Airport, TX 75261



Visit Website